



TRIPAL SERIES

Global



2021 VERTICAL

The Vertical Works model has proved itself to be one of the most competitive trials bikes on the market over the last seasons. Whether in the TrialGP World Championship or in the most iconic events of the sport, this bike has demonstrated time after time its impressive performance, reliability and pedigree. Vertigo is now pleased to unveil its latest evolution for the 2021 season. The 2021 Works model is a bike that capitalises on the hard work and many improvements learnt during the past years. With a comprehensive range of engine sizes available from the 125cc, 200cc, 250cc, and 280cc through to the 300cc version, we feel there is a bike to suite all riders from club level right through to the most demanding riders competing at the highest level and in all conditions.



Vertigo's Factory riders together with our brand ambassador Dougie Lampkin have been working closely with the factory's engineers relentlessly to develop this new model. Many engine components have been updated providing the new Vertical works model with an improved response and power delivery. **The new cylinder head** is one of these components which for 2021 has a redesigned combustion chamber to provide improved combustion. **The throttle body** has also been improved to provide the rider with an even more progressive and precise throttle response.

The bike's **dry and wet maps** have also been updated so as to offer even better traction and power delivery in all conditions. The map switch is also now located on the air box cover, thus allowing the rider to easily and quickly change between maps on the go.



A **new induction tube** provides a better seal between the airbox and throttle body, keeping out all water and dust.

For 2021 the **exhaust pipe** on this works model is in stainless steel.

Working in harmony with these engine improvements the new Vertical Works features a range of high-end and adjustable components on its cycle part, which will help all riders extract the maximum performance out of the 2021 model.

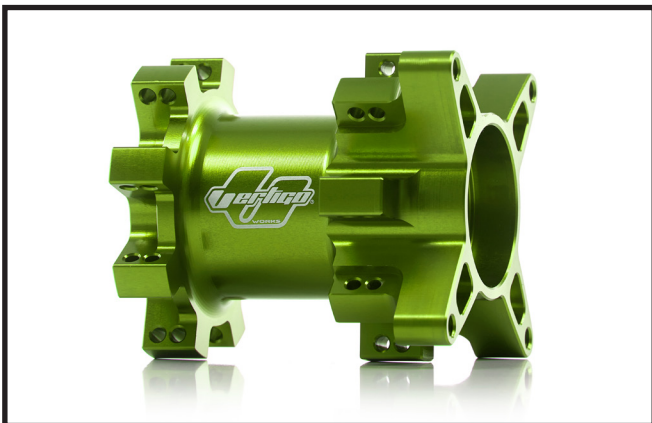
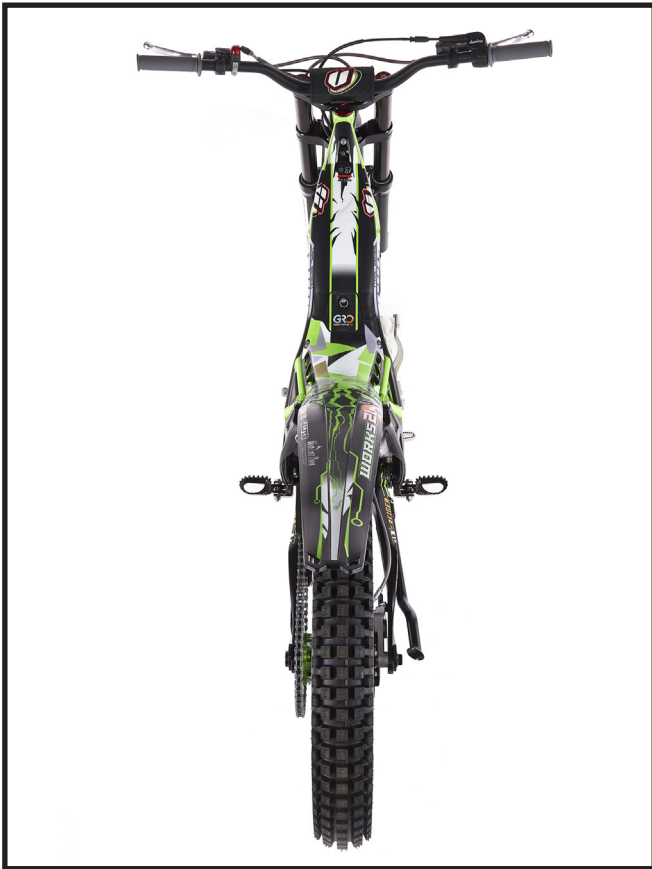
The bike comes equipped with the **fully adjustable Tech Alu Black front forks** and the **Reiger shock** which is adjustable in compression, extension and spring preload.

These quality suspension components linked with the innovative and exclusive **Vertigo CrMo multitubular frame**, which for 2021 is finished in the traditional Vertigo green, help to ensure Vertigo is in a class of its own in terms of balance, manoeuvrability and the ability of the bike to find that all important traction in all conditions and terrain.

Vertigo's iconic green also returns to be the main colour on the bike's graphics. Which linked with black and white provide a stunning combination to give an aggressive and modern overall look to the bike.

Attention to detail is what Vertigo motors is all about and the 2021 Works model is no exception with many detailed and high quality green anodised components such as the new billet hubs, which provide an added touch of class to this very attractive new bike.





Key features of the 2021 Vertical

ENGINE KEY FEATURES

Capacities: 125cc, 200cc ,250cc, 280cc, 300cc

Redesigned cylinder head to improve combustion

Throttle body with a more progressive response

New specific maps for the 2021 Vertical (dry and wet conditions)

Exhaust pipe in stainless steel

New induction tube to provide a better seal between the airbox and throttle body

CYCLE PART KEY FEATURES

CrMo multitubular frame in Vertigo's classic green

Adjustable Tech Alu Black front fork

Reiger shock adjustable in extension, compression and spring preload

New wheels configuration with anodised green hubs and black rims

Dunlop D803GP tires

2021 Works new graphics

Vertigo handlebar

Vertigo bar pad

FIM homologated magnetic kill switch system

Anodised green and black details

Weight 68kg